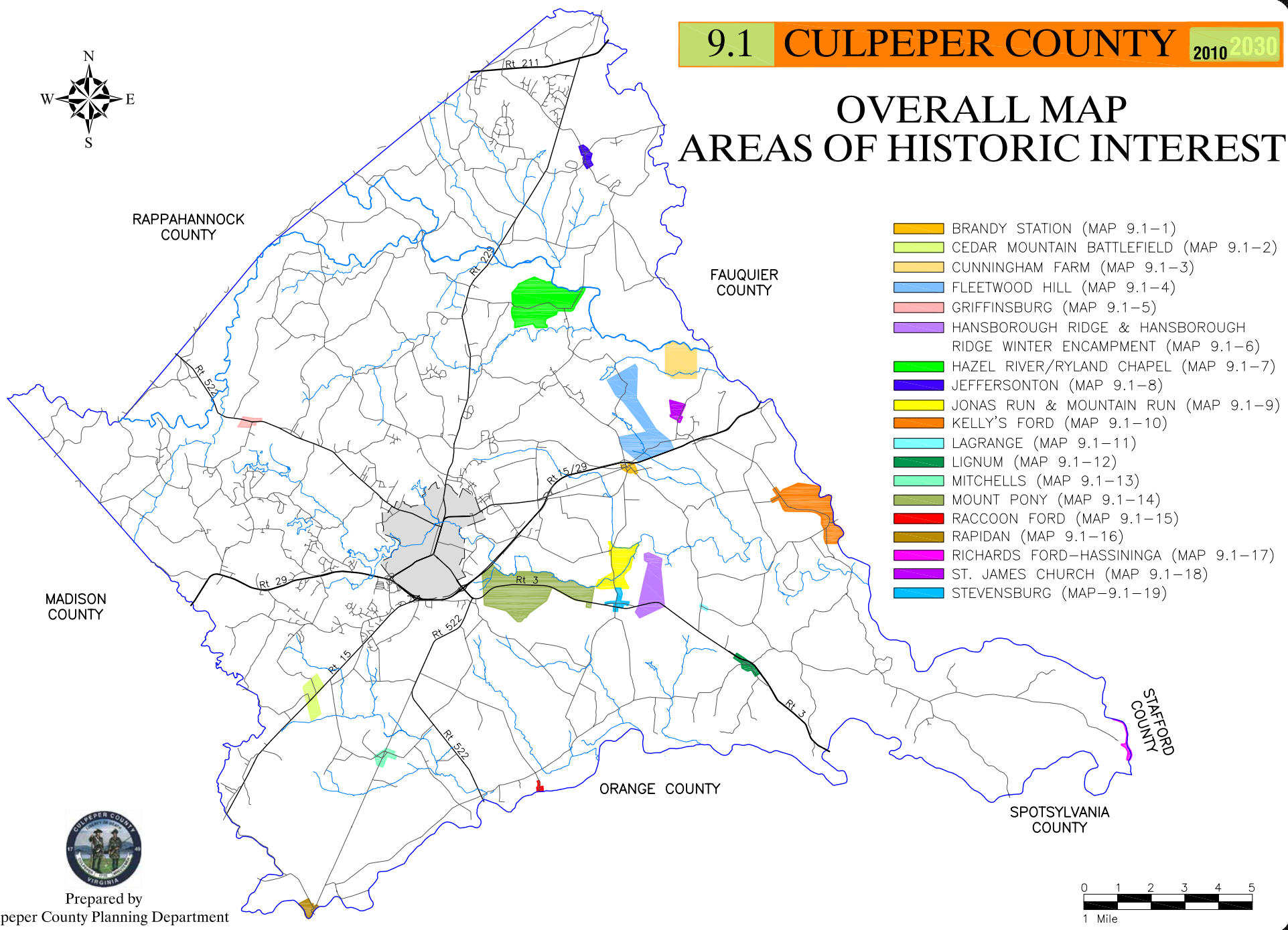


9.1 CULPEPER COUNTY 2010 2030

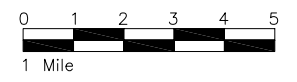
**OVERALL MAP
AREAS OF HISTORIC INTEREST**



- BRANDY STATION (MAP 9.1-1)
- CEDAR MOUNTAIN BATTLEFIELD (MAP 9.1-2)
- CUNNINGHAM FARM (MAP 9.1-3)
- FLEETWOOD HILL (MAP 9.1-4)
- GRIFFINSBURG (MAP 9.1-5)
- HANSBOROUGH RIDGE & HANSBOROUGH RIDGE WINTER ENCAMPMENT (MAP 9.1-6)
- HAZEL RIVER/RYLAND CHAPEL (MAP 9.1-7)
- JEFFERSONTON (MAP 9.1-8)
- JONAS RUN & MOUNTAIN RUN (MAP 9.1-9)
- KELLY'S FORD (MAP 9.1-10)
- LAGRANGE (MAP 9.1-11)
- LIGNUM (MAP 9.1-12)
- MITCHELLS (MAP 9.1-13)
- MOUNT PONY (MAP 9.1-14)
- RACCOON FORD (MAP 9.1-15)
- RAPIDAN (MAP 9.1-16)
- RICHARDS FORD-HASSINGA (MAP 9.1-17)
- ST. JAMES CHURCH (MAP 9.1-18)
- STEVENSBURG (MAP-9.1-19)



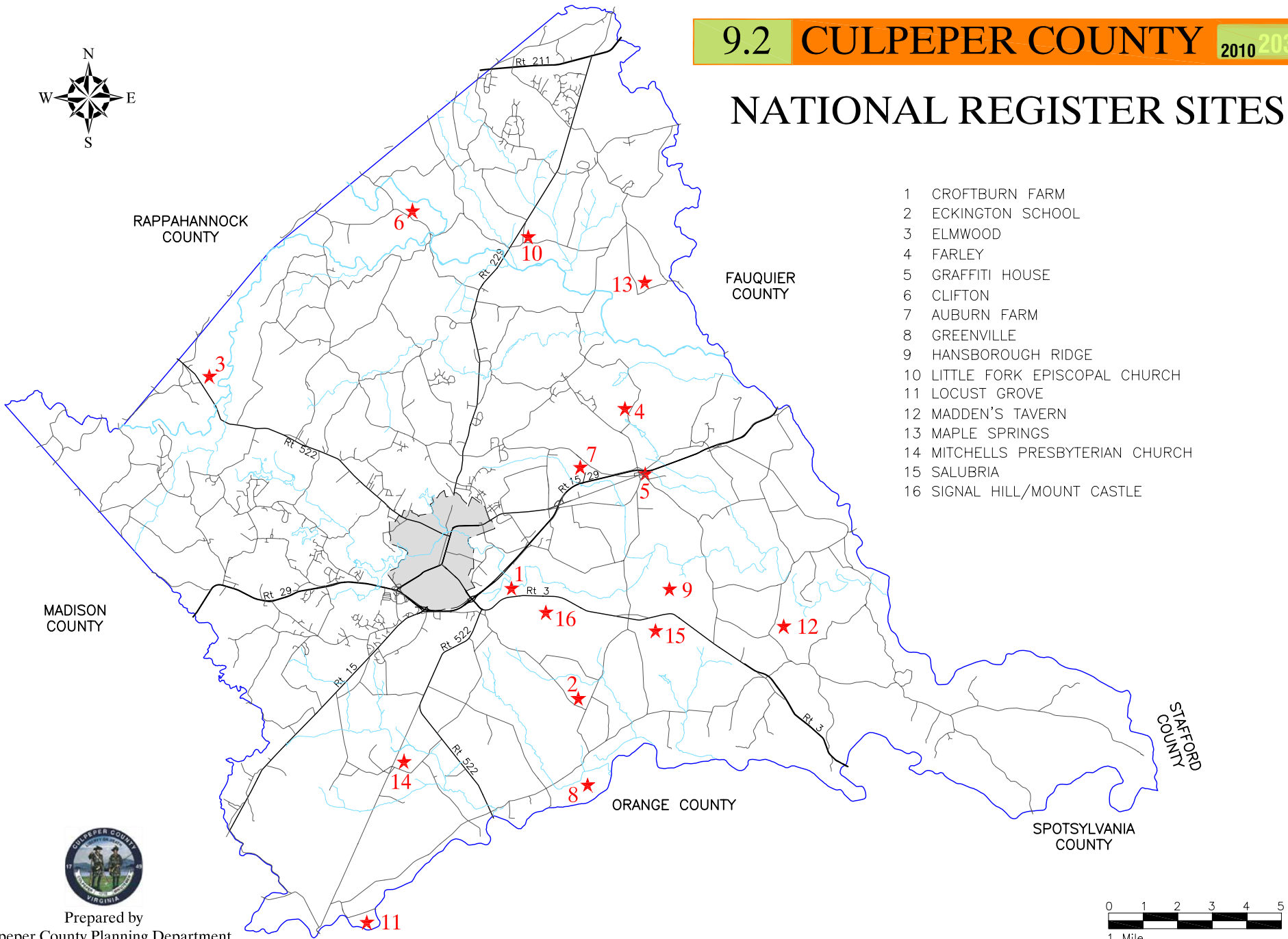
Prepared by
Culpeper County Planning Department



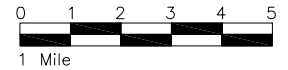
9.2 CULPEPER COUNTY 2010 2030

NATIONAL REGISTER SITES

- 1 CROFTBURN FARM
- 2 ECKINGTON SCHOOL
- 3 ELMWOOD
- 4 FARLEY
- 5 GRAFFITI HOUSE
- 6 CLIFTON
- 7 AUBURN FARM
- 8 GREENVILLE
- 9 HANSBOROUGH RIDGE
- 10 LITTLE FORK EPISCOPAL CHURCH
- 11 LOCUST GROVE
- 12 MADDEN'S TAVERN
- 13 MAPLE SPRINGS
- 14 MITCHELLS PRESBYTERIAN CHURCH
- 15 SALUBRIA
- 16 SIGNAL HILL/MOUNT CASTLE



Prepared by
Culpeper County Planning Department



9.3 CULPEPER COUNTY 2010 2030

POTENTIAL NATIONAL REGISTER SITES

- 1 AFTON
- 2 ANNANDALE
- 3 BEAUREGARD
- 4 BERRY HILL
- 5 BROOKSIDE
- 6 CLOVER HILL
- 7 HORSE SHOE
- 8 JEFFERSONTON BAPTIST CHURCH
- 9 LAGRANGE
- 10 MOUNT PLEASANT
- 11 MOUNTAIN VIEW
- 12 NORTH CLIFF
- 13 PRESQ' ISLE
- 14 ROSE HILL FARM
- 15 SOMERVILLE
- 16 STUART FIELD
- 17 WHEATDALE

