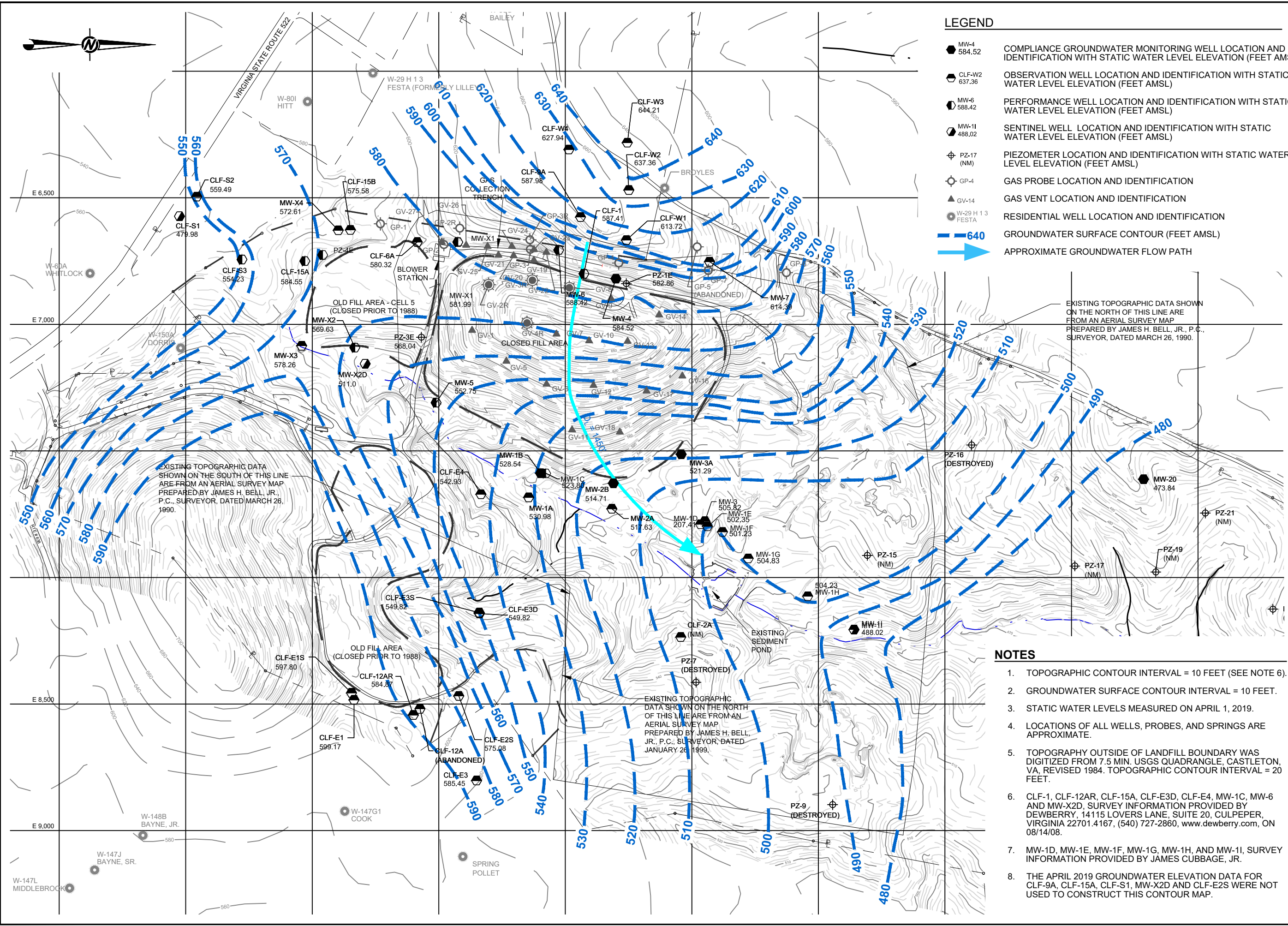


ATTACHMENT V
POTENTIOMETRIC SURFACE MAP (DRAWING 4)



LEGEND

- MW-4 584.52 COMPLIANCE GROUNDWATER MONITORING WELL LOCATION AND IDENTIFICATION WITH STATIC WATER LEVEL ELEVATION (FEET AMSL)
- CLF-W2 637.36 OBSERVATION WELL LOCATION AND IDENTIFICATION WITH STATIC WATER LEVEL ELEVATION (FEET AMSL)
- MW-6 588.42 PERFORMANCE WELL LOCATION AND IDENTIFICATION WITH STATIC WATER LEVEL ELEVATION (FEET AMSL)
- MW-11 488.02 SENTINEL WELL LOCATION AND IDENTIFICATION WITH STATIC WATER LEVEL ELEVATION (FEET AMSL)
- PZ-17 (NM) PIEZOMETER LOCATION AND IDENTIFICATION WITH STATIC WATER LEVEL ELEVATION (FEET AMSL)
- GP-4 GAS PROBE LOCATION AND IDENTIFICATION
- GV-14 GAS VENT LOCATION AND IDENTIFICATION
- W-29 H 1 3 FESTA RESIDENTIAL WELL LOCATION AND IDENTIFICATION
- 640 GROUNDWATER SURFACE CONTOUR (FEET AMSL)
- APPROXIMATE GROUNDWATER FLOW PATH



EXISTING TOPOGRAPHIC DATA SHOWN ON THE NORTH OF THIS LINE ARE FROM AN AERIAL SURVEY MAP PREPARED BY JAMES H. BELL, JR., P.C., SURVEYOR, DATED MARCH 26, 1990.

EXISTING TOPOGRAPHIC DATA SHOWN ON THE SOUTH OF THIS LINE ARE FROM AN AERIAL SURVEY MAP PREPARED BY JAMES H. BELL, JR., P.C., SURVEYOR, DATED MARCH 26, 1990.

EXISTING TOPOGRAPHIC DATA SHOWN ON THE NORTH OF THIS LINE ARE FROM AN AERIAL SURVEY MAP PREPARED BY JAMES H. BELL, JR., P.C., SURVEYOR, DATED JANUARY 26, 1999.

NOTES

1. TOPOGRAPHIC CONTOUR INTERVAL = 10 FEET (SEE NOTE 6).
2. GROUNDWATER SURFACE CONTOUR INTERVAL = 10 FEET.
3. STATIC WATER LEVELS MEASURED ON APRIL 1, 2019.
4. LOCATIONS OF ALL WELLS, PROBES, AND SPRINGS ARE APPROXIMATE.
5. TOPOGRAPHY OUTSIDE OF LANDFILL BOUNDARY WAS DIGITIZED FROM 7.5 MIN. USGS QUADRANGLE, CASTLETON, VA, REVISED 1984. TOPOGRAPHIC CONTOUR INTERVAL = 20 FEET.
6. CLF-1, CLF-12AR, CLF-15A, CLF-E3D, CLF-E4, MW-1C, MW-6 AND MW-X2D, SURVEY INFORMATION PROVIDED BY DEWBERRY, 14115 LOVERS LANE, SUITE 20, CULPEPER, VIRGINIA 22701.4167, (540) 727-2860, www.dewberry.com, ON 08/14/08.
7. MW-1D, MW-1E, MW-1F, MW-1G, MW-1H, AND MW-1I, SURVEY INFORMATION PROVIDED BY JAMES CUBBAGE, JR.
8. THE APRIL 2019 GROUNDWATER ELEVATION DATA FOR CLF-9A, CLF-15A, CLF-S1, MW-X2D AND CLF-E2S WERE NOT USED TO CONSTRUCT THIS CONTOUR MAP.

YYYY-MM-DD	2020-10-20
DESIGNED	MGW
PREPARED	SIB
REVIEWED	MGW
APPROVED	MGW



CLIENT
CULPEPER COUNTY

PROJECT
LAUREL VALLEY CENTER SANITARY LANDFILL
CULPEPER COUNTY, VIRGINIA

TITLE
GROUNDWATER SURFACE CONTOUR MAP
APRIL 1, 2019

PROJECT NO.
20-145729

Path: G:\Plan Production Data\Final\Drawings Data\Final\20-145729A - 2020 CASE REPORT\Active Drawings\20145729A04.dwg

1 in IF THIS MEASUREMENT DOES NOT MATCH WHAT IS SHOWN, THE SHEET SIZE HAS BEEN MODIFIED FROM ANSI B