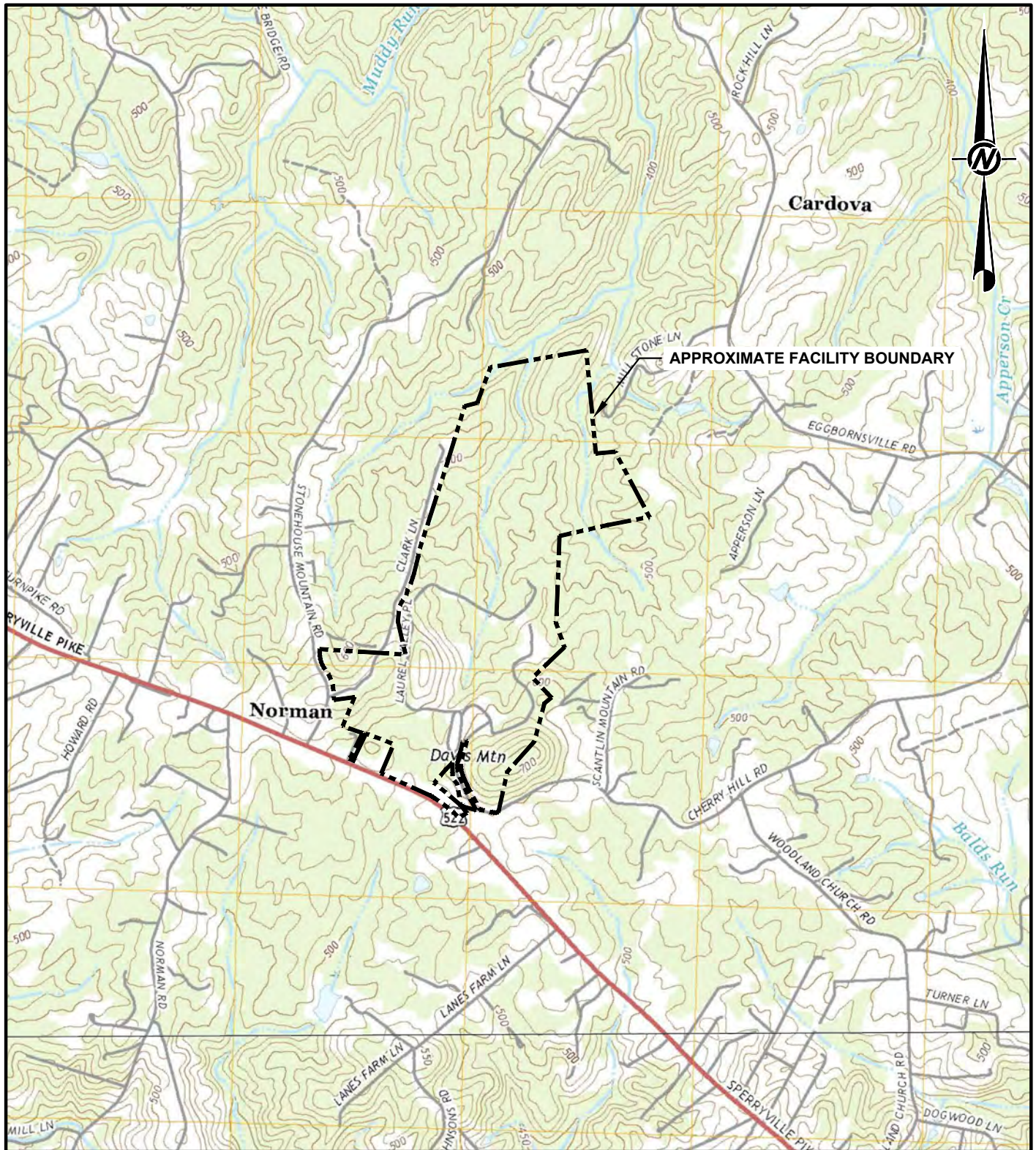
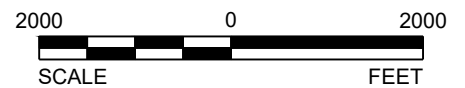


ATTACHMENT I
UNITED STATES GEOLOGICAL SURVEY 7.5-MINUTE TOPOGRAPHIC MAP
(DRAWING 1)



REFERENCE

BASE MAP CONSISTS OF 7.5-MINUTE USGS TOPOGRAPHIC QUADRANGLE NAMED CULPEPER WEST AND CASTLETON, VIRGINIA, DATED 2019.



CLIENT
CULPEPER COUNTY

PROJECT
LAUREL VALLEY CENTER SANITARY LANDFILL
CULPEPER COUNTY, VIRGINIA

CONSULTANT

YYYY-MM-DD 2020-10-12

DESIGNED SIB

PREPARED SIB

REVIEWED MGW

APPROVED MGW

TITLE
SITE LOCATION MAP

PROJECT NO.
20-145729

REV.
0

DRAWING
1

